



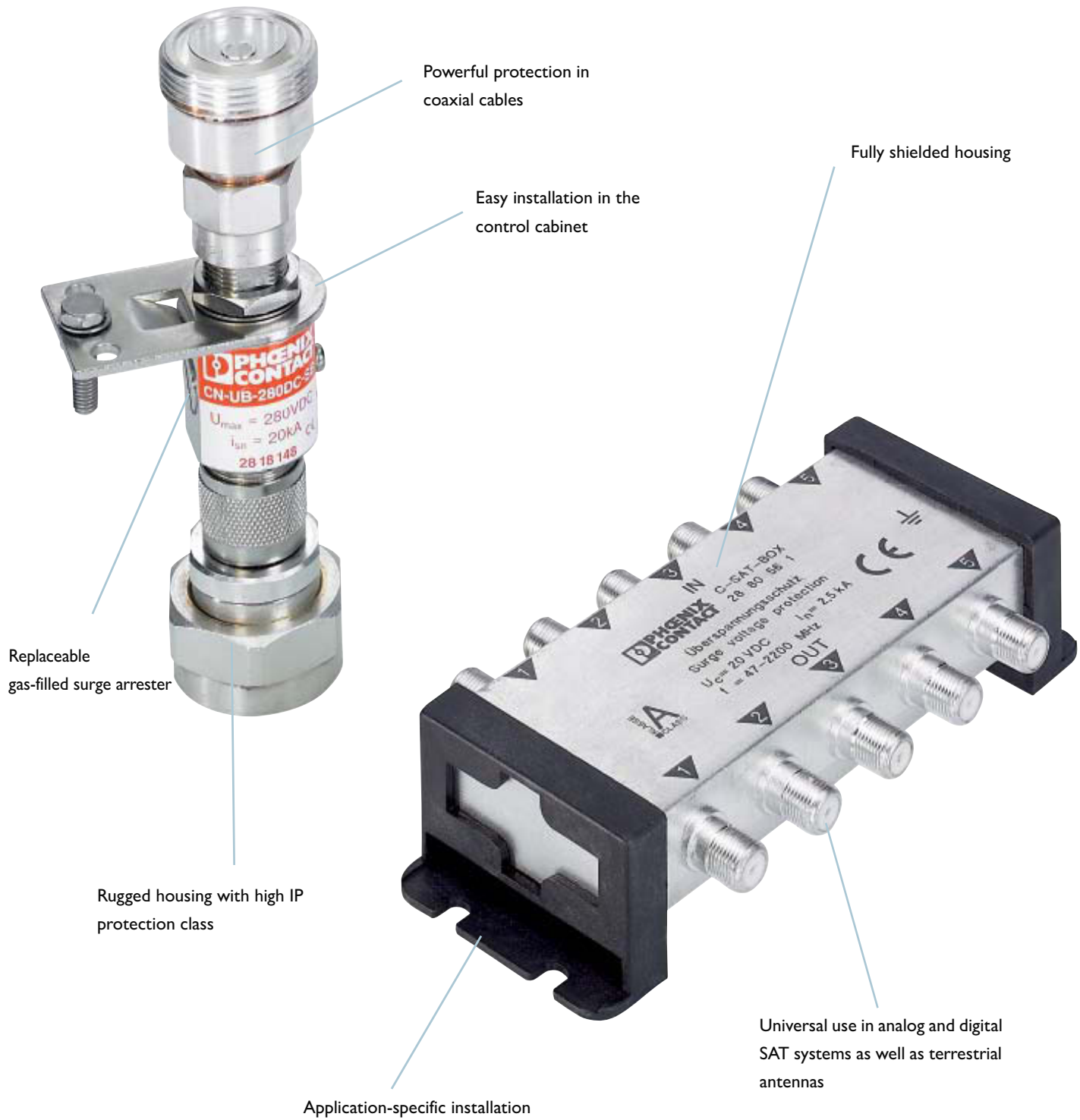
Surge protection for transceiver systems



Exposed antenna systems and outdoor cables that extend beyond a building are particularly at risk, as they are directly exposed to atmospheric discharge. When it comes to broadband and narrow-band networks as well as mobile phone and wireless technology, TRABTECH always provides the right protection solution and combats surge voltage coupling and potential transfer through to sensitive interfaces.

Main range	164
Features	166
Selection guide	168
Mobile/government wireless systems	
COAXTRAB	170
COAXTRAB with LAMBDA/4	172
Video communication	
COAXTRAB	174
Radio and television sets	
C-SAT-BOX	176
COAXTRAB	177
MAINTRAB	178
COMBITRAB	179
Applications	180

COAXTRAB



You won't lose reception with COAXTRAB

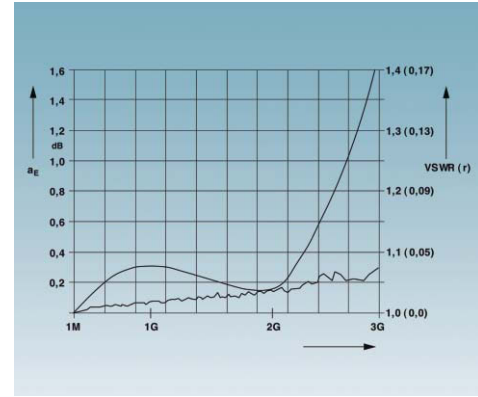
Transceiver systems are generally considered to be particularly susceptible to surge voltages. Antenna cables which extend beyond a building and are usually very long, plus the antennas themselves, are directly exposed to atmospheric discharge. Cables with a coaxial structure and thus favorable EMC properties are primarily used in antenna systems. However, the risk of surge voltage coupling in antenna cables and potential transfer through to the sensitive interfaces of transceiver systems is not eliminated.

Thanks to interface-optimized surge protective devices, the COAXTRAB product range significantly increases safety for transceiver equipment. The aim of such safety measures is to increase the availability and operability of the devices affected.



Shielding

Excellent shielding properties are vital for clean transmission. Not only does the rugged metal housing provide excellent shielding, but it also enables use in harsh industrial environments.



Customized products

A suitable protective device is available for all applications (SAT receiver systems, mobile phones, video monitoring, etc.).

Signals are transmitted cleanly with very low attenuation values.



Performance classes

Standard-compliant protection in all performance classes: from coarse protection (category D1, 10/350 μ s) through to fine protection (category C1, 8/20 μ s)



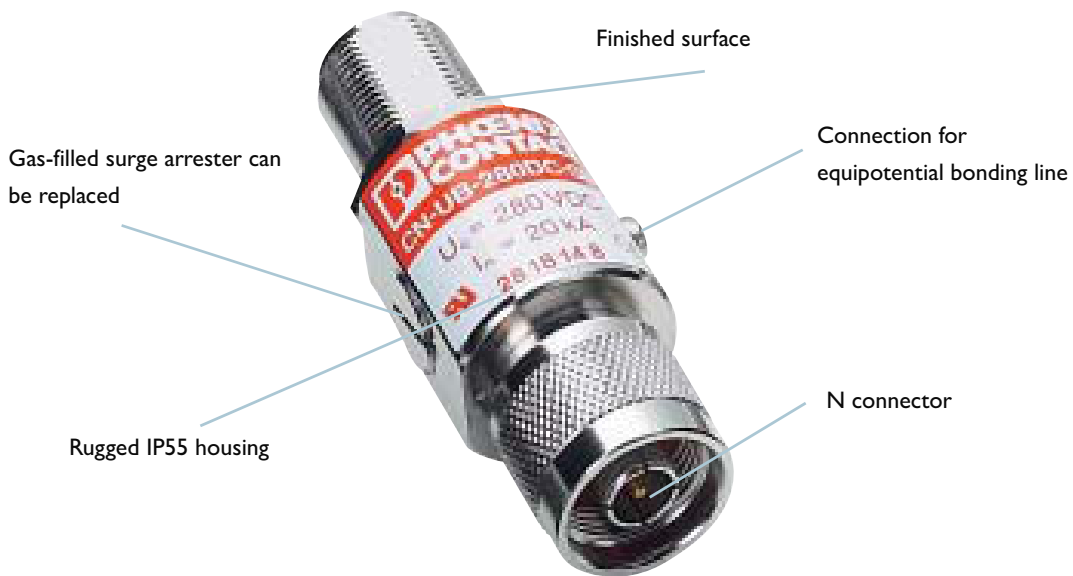
Connection method

The right connection method to suit the application: F connector, TV connector, type N, 7/16, UHF, BNC.

COAXTRAB CN-LAMBDA/4...
Surge protection & selective band filter



COAXTRAB CN-UB-280DC...
Broadband surge protection through low impedance and excellent reflection behavior



COAXTRAB C-TV...
Protective adapter for TV and SAT systems






MAINTRAB MNT...
Combined surge protection adapter



Surge protection for transceiver systems

Selection guide

The interface matrix indicates which surge protective device is suitable for a specific transceiver system.

	Technology	Interface
Wireless systems		E.g., GPS, GSM, WiMAX, UMTS, LTE
TV, radio		E.g., cable TV, satellite TV
Video signal		E.g., monitoring systems



Note

Products bearing this stamp (connector elements) can be tested with the CHECKMASTER.

	DIN rail module	Adapter	Socket adapter	Socket strip	Arrester	Page
		✓			CN-UB-280DC CN-UB-70DC	170
		✓			CN-LAMBDA/4...	172
		✓			C-UB/E	171
		✓			C-SAT-BOX	176
		✓			C-TV-SAT	177
					C-TV/HIFI	177
			✓		MNT-TV-SAT...	178
				✓	CBT-TV-SAT	179
		✓			CF-UB-280DC-SB-SET	171
		✓			C-UBF 5DC...	174
		✓			C-UB/E	171
✓					PT 3-PB-ST + PT 1x2+F-BE	101
✓					PT 2x2-HF-5DC-ST + PT 2x2-BE	101

Surge protection for transceiver stations

Mobile/government wireless systems

Protective adapters with coaxial connection

COAXTRAB

C...UB...

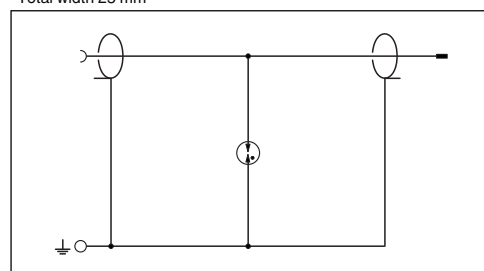
- For antennas with N, F, 7/16 connection
- High transmission capacities even for frequencies up to 6 GHz
- Gas-filled surge arrester can be replaced in case of malfunction
- Mounting plate enables fixed mounting, e.g., in a control cabinet
- The protective adapters can also be used in a 75 Ω system with 50 Ω BNC connectors

Notes:
Dimensional drawings starting on page 240
Approvals starting on page 252
Attenuation curves, from page 246



With N connector, grounded shield

Total width 25 mm



Electrical data
IEC category / EN type
Maximum continuous operating voltage U_C
Nominal current I_N
Nominal discharge surge current I_n (8/20) μ s
Total surge current (8/20) μ s
Output voltage limitation at 1 kV/ μ s
Cut-off frequency f_g (3 dB)
In a 50 Ω system
Standing wave ratio SWR in a 50 Ω system
Permissible RF power P_{max}
General data
Temperature range
Degree of protection according to IEC 60529/EN 60529
Connection method
Test standards

Technical data	
CN-UB-280DC...	CN-UB-70DC...
C2 / C3 / D1	C2 / C3 / D1
280 V DC / 195 V AC	70 V DC / 50 V AC
5 A (25°C)	10 A
Core-Shield / Core-Ground	Core-Shield / Core-Ground
20 kA / 20 kA	5 kA / 5 kA
20 kA	-
Core-Shield / Core-Ground	Core-Shield / Core-Ground
≤ 700 V / ≤ 700 V	≤ 650 V / ≤ 650 V
-	-
Typ. 1.1 (≤ 2 GHz)	Typ. 1.15 (6 GHz)
700 W (VSWR = 1.1)	30 W (VSWR = 1.15)
-	-
50 Ω N connector	50 Ω N connector
IEC 61643-21 / DIN EN 61643-21	IEC 61643-21 / DIN EN 61643-21

Description
COAXTRAB , attachment plug with surge protection for coaxial cables
BNC connection, female/male
N connector, male/female
N connector, female/female
Male/female
Female/female
COAXTRAB , set comprising: attachment plug and adapters
F connector, male/female
7/16, male/female

Ordering data		
Type	Order No.	Pcs. / Pkt.
CN-UB-280DC-SB	2818148	1
CN-UB-280DC-BB	2818850	1
CN-UB-70DC-6-SB	2803153	1
CN-UB-70DC-6-BB	2803166	1

Replacement gas-filled surge arrester , for CN-UB-280DC...
Mounting plate , for individual attachment to housing panels
BNC connector , single-level, for mounting on NS 32 or NS 35/7.5
50 Ω wave impedance
Adapter , < 0.3 dB insertion loss at 2.4 GHz
N (male) -> SMA (female)
Adapter cable , pigtail, 1.5 dB insertion loss at 2.4 GHz; 50 Ω impedance
50 cm long, MCX (male) -> N (male)

Accessories		
Type	Order No.	Pcs. / Pkt.
CN-UB-G1	2818203	10
CN-UB/MP	2818135	10
RAD-ADP-N/M-SMA/F	2917036	1
RAD-PIG-EF316-MCX-N	2867681	1



Set with F connector, grounded shield

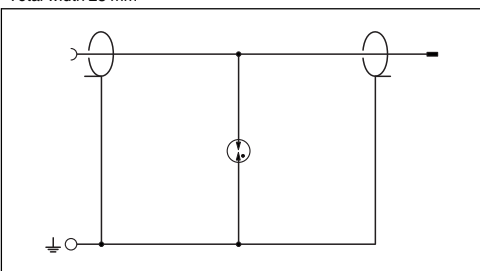


Set with 7/16 connector, grounded shield



With BNC connector, floating shield

Total width 25 mm



Technical data

C2 / C3 / D1
280 V DC / 195 V AC
5 A (25°C)

20 kA / 20 kA
20 kA

≤ 700 V / ≤ 700 V

-
-
700 W (VSWR = 1.1)

-20°C ... 80°C
IP20
F connector
IEC 61643-21

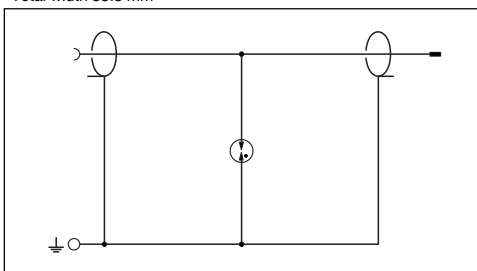
Ordering data

Type	Order No.	Pcs. / Pkt.
CF-UB-280DC-SB-SET	2839541	1

Accessories

CN-UB-G1	2818203	10
CN-UB/MP	2818135	10

Total width 35.5 mm



Technical data

C2 / C3 / D1
280 V DC / 195 V AC
5 A (25°C)

20 kA / 20 kA
20 kA

≤ 700 V / ≤ 700 V

-
Typ. 1.1 (≤ 2 GHz)
700 W (VSWR = 1.1)

-25°C ... 80°C
IP55
7/16 connector
IEC 61643-21 / DIN EN 61643-21

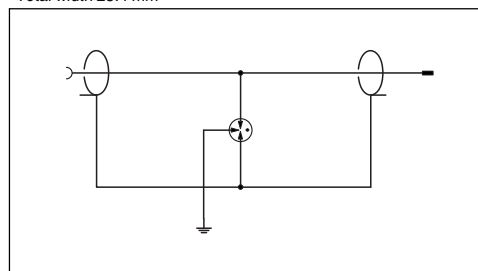
Ordering data

Type	Order No.	Pcs. / Pkt.
C7/16-UB-280DC-SB-SET	2881544	1

Accessories

CN-UB/MP	2818135	10

Total width 25.4 mm



Technical data

C-UB/E
C2 / C3 / D1
180 V DC / 130 V AC
3.5 A (25°C)

5 kA / 5 kA
10 kA

- / ≤ 470 V

-
Typ. 1.3 (≤ 150 MHz)
300 W (VSWR = 1.1)

50 Ω BNC

CN-UB/E
C2 / C3 / D1
180 V DC / 130 V AC
5 A (25°C)

5 kA / 5 kA
10 kA

- / ≤ 470 V

-
≤ 1.2 (≤ 200 MHz)
300 W (VSWR = 1.1)

-40°C ... 80°C
IP20
50 Ω N connector
IEC 61643-21 / DIN EN 61643-21

Ordering data

Type	Order No.	Pcs. / Pkt.
C-UB/E	2763701	10
CN-UB/E	2763691	1
CN-UB/E-BB	2817686	1

Accessories

BNC-V 50	2805041	10

Surge protection for transceiver stations

Mobile/government wireless systems

Protection for mobile phone antennas

- Maintenance-free surge protection with LAMBDA/4 technology
- Low protection level
- High HF power in the kW range
- Connection: N connector

Notes:
Dimensional drawings starting on page 240
Approvals starting on page 252
Attenuation curves, from page 246

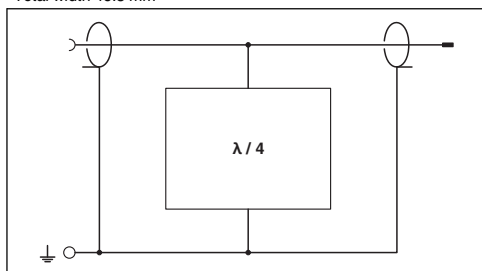


For GSM systems (1.7 GHz - 2.3 GHz), grounded shield



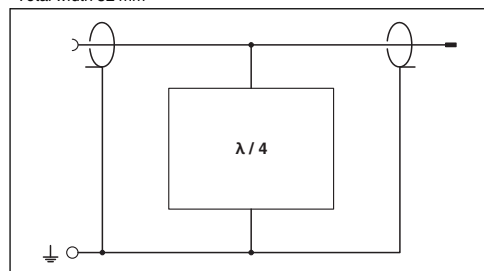
Protective adapter set (1.7 GHz - 2.3 GHz) with 7/16 connection, grounded shield

Total width 46.5 mm



Technical data

Total width 52 mm



Technical data

Electrical data	
IEC category / EN type	C2 / C3 / D1
Nominal current I_N	5 A (25°C)
Nominal discharge surge current I_n (8/20) μ s	20 kA / 20 kA
Total surge current (8/20) μ s	20 kA
Output voltage limitation at 1 kV/ μ s	20 kA
Frequency range	≤ 10 V / ≤ 10 V
Standing wave ratio SWR in a 50 Ω system	1.7 GHz ... 2.3 GHz
Permissible. RF power P_{max}	≤ 1.25 (1.7 GHz ... 2.3 GHz)
General data	
Temperature range	-40°C ... 100°C
Degree of protection according to IEC 60529/EN 60529	IP55
Connection method	N connector
Test standards	IEC 61643-21

Electrical data	
IEC category / EN type	C2 / C3 / D1
Nominal current I_N	5 A (25°C)
Nominal discharge surge current I_n (8/20) μ s	20 kA / 20 kA
Total surge current (8/20) μ s	20 kA
Output voltage limitation at 1 kV/ μ s	20 kA
Frequency range	≤ 10 V / ≤ 10 V
Standing wave ratio SWR in a 50 Ω system	1.7 GHz ... 2.3 GHz
Permissible. RF power P_{max}	≤ 1.25 (1.7 GHz ... 2.3 GHz)
General data	
Temperature range	-40°C ... 100°C
Degree of protection according to IEC 60529/EN 60529	IP55
Connection method	7/16 connector
Test standards	IEC 61643-21

Ordering data

Description	Type	Order No.	Pcs. / Pkt.	
COAXTRAB , protective adapter for antenna connections with LAMBDA/4 technology, connection: N connector	Female/female	CN-LAMBDA/4-2.0-BB	2818863	1
	Male/female	CN-LAMBDA/4-2.0-SB	2818876	1
COAXTRAB , protective adapter set for antenna connections with LAMBDA/4 technology, connection: N connector to 7/16 connector	7/16, female/male	C7/16-LAMBDA/4-2.0-BB-SET	2839046	1
	7/16, female/female	C7/16-LAMBDA/4-2.0-BB-SET	2839059	1

Description	Type	Order No.	Pcs. / Pkt.	
COAXTRAB , protective adapter for antenna connections with LAMBDA/4 technology, connection: N connector	Female/female	CN-LAMBDA/4-2.0-BB	2818863	1
	Male/female	CN-LAMBDA/4-2.0-SB	2818876	1
COAXTRAB , protective adapter set for antenna connections with LAMBDA/4 technology, connection: N connector to 7/16 connector	7/16, female/male	C7/16-LAMBDA/4-2.0-BB-SET	2839046	1
	7/16, female/female	C7/16-LAMBDA/4-2.0-BB-SET	2839059	1

Accessories

Mounting plate , for individual attachment to housing panels	CN-UB/MP	2818135	10
Adapter , < 0.3 dB insertion loss at 2.4 GHz	RAD-ADP-N/M-SMA/F	2917036	1
N (male) -> SMA (female)	RAD-PIG-EF316-MCX-N	2867681	1
Adapter cable , pigtail, 1.5 dB insertion loss at 2.4 GHz; 50 Ω impedance			
50 cm long, MCX (male) -> N (male)			

Mounting plate , for individual attachment to housing panels	CN-UB/MP	2818135	10
Adapter , < 0.3 dB insertion loss at 2.4 GHz	RAD-ADP-N/M-SMA/F	2917036	1
N (male) -> SMA (female)	RAD-PIG-EF316-MCX-N	2867681	1
Adapter cable , pigtail, 1.5 dB insertion loss at 2.4 GHz; 50 Ω impedance			
50 cm long, MCX (male) -> N (male)			



For GSM and WiMAX systems
(2.4 GHz - 5.9 GHz), grounded shield

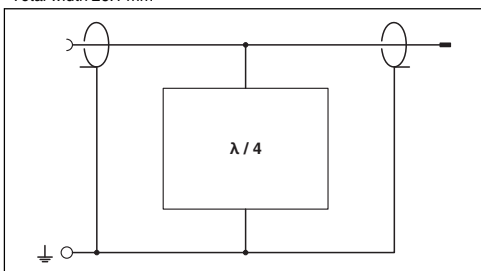


For TETRA systems (380 MHz - 470 MHz),
grounded shield



For 800/900 MHz and 1800/1900 MHz GSM
systems, and UMTS, grounded shield

Total width 26.1 mm



Technical data

C2 / C3 / D1
5 A (25°C)

50 kA / 50 kA
60 kA

≤ 11 V (6 kV/3 kA) / ≤ 11 V (6 kV/3 kA)
2.4 GHz ... 5.9 GHz
Typ. 1.1 (≤ 1.20 (2.4 GHz ... 5.9 GHz))
≤ 500 W

-40°C ... 90°C
IP68
N connector
IEC 61643-21

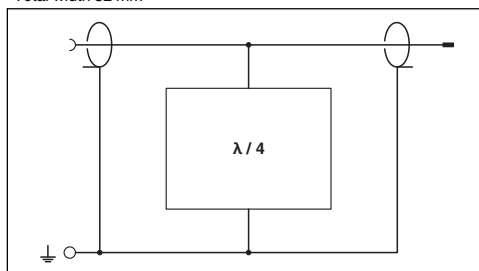
Ordering data

Type	Order No.	Pcs. / Pkt.
CN-LAMBDA/4-5.9-BB	2838490	1
CN-LAMBDA/4-5.9-SB	2800023	1

Accessories

CN-UB/MP-90DEG-50	2803137	1
RAD-ADP-N/M-SMA/F	2917036	1
RAD-PIG-EF316-MCX-N	2867681	1

Total width 32 mm



Technical data

C2 / C3 / D1
-

20 kA / 20 kA
30 kA

≤ 55 V (6 kV/3 kA) / ≤ 55 V (6 kV/3 kA)
380 MHz ... 470 MHz
Typ. 1.05 (≤ 1.15)
≤ 800 W

-40°C ... 90°C
IP68
N connector
IEC 61643-21

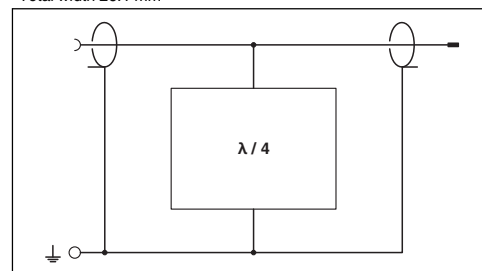
Ordering data

Type	Order No.	Pcs. / Pkt.
CN-LAMBDA/4-0.47-BB	2800021	1
CN-LAMBDA/4-0.47-SB	2800022	1

Accessories

CN-UB/MP-90DEG-50	2803137	1
RAD-ADP-N/M-SMA/F	2917036	1
RAD-PIG-EF316-MCX-N	2867681	1

Total width 26.1 mm



Technical data

C2 / C3 / D1
5 A (25°C)

50 kA / 50 kA
60 kA

≤ 12 V (6 kV/3 kA) / ≤ 12 V (6 kV/3 kA)
0.82 GHz ... 2.2 GHz
Typ. 1.1 (≤ 1.20 (0.82 GHz ... 2.2 GHz))
≤ 500 W

-40°C ... 90°C
IP68
N connector
IEC 61643-21

Ordering data

Type	Order No.	Pcs. / Pkt.
CN-LAMBDA/4-2.2-BB	2800024	1
CN-LAMBDA/4-2.2-SB	2800025	1

Accessories

CN-UB/MP-90DEG-50	2803137	1
RAD-ADP-N/M-SMA/F	2917036	1
RAD-PIG-EF316-MCX-N	2867681	1

Surge protection for transceiver stations

Video communication

Protective adapters with BNC connection COAXTRAB

- For insertion in the cable
- Ground connection via separately led cable

Notes:
Dimensional drawings starting on page 240
Approvals starting on page 252
Attenuation curves, from page 246

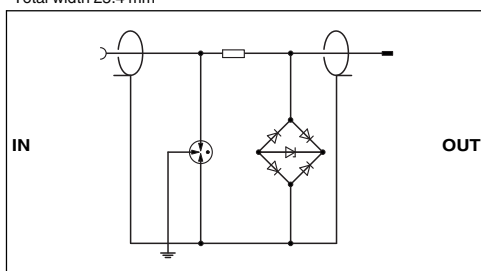


For floating communication systems

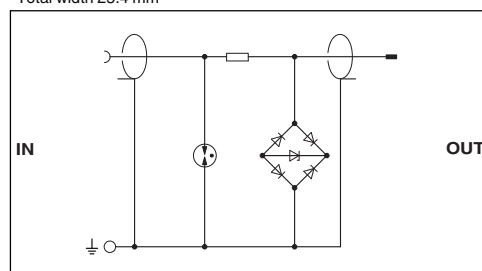


For non-floating communication systems

Total width 25.4 mm



Total width 25.4 mm



Electrical data	
IEC category / EN type	Core-Shield / Core-Ground
Maximum continuous operating voltage U_c	5 V DC
Nominal current I_N	185 mA (25°C)
Nominal discharge surge current I_n (8/20) μ s	10 kA / 10 kA
Total surge current (8/20) μ s	20 kA
Output voltage limitation at 1 kV/ μ s	Core-Shield / Core-Ground
Cut-off frequency f_g (3 dB) In a 50 Ω system	Asymmetrical
General data	
Temperature range	-40°C ... 80°C
Degree of protection according to IEC 60529/EN 60529	IP20
Connection method	50 Ω BNC
Test standards	IEC 61643-21

Technical data		
... 5DC/E	... 24DC/E	... 5DC/E 75
C2 / C3 / D1	C2 / C3 / D1	C2 / C3 / D1
5 V DC	30 V DC	5 V DC
185 mA (25°C)	185 mA (25°C)	-
10 kA / 10 kA	10 kA / 10 kA	- / -
20 kA	20 kA	-
≤ 13 V / ≤ 500 V	≤ 42 V / ≤ 500 V	≤ 13 V / ≤ 500 V
Typ. 90 MHz	Typ. 170 MHz	Typ. 80 MHz

Technical data	
... 5DC	... 24DC
C2 / C3 / D1	C2 / C3 / D1
5 V DC	30 V DC
185 mA (25°C)	185 mA (25°C)
10 kA / 10 kA	10 kA / 10 kA
10 kA	10 kA
≤ 13 V / ≤ 13 V	≤ 45 V / ≤ 45 V
Typ. 150 MHz	Typ. 150 MHz

Description	
COAXTRAB, as surge protection for coaxial cables, connection via male and female connectors	
50 Ω BNC	C-UFB- 5DC/E
50 Ω BNC	C-UFB-24DC/E
75 Ω BNC	C-UFB- 5DC/E 75

Ordering data		
Type	Order No.	Pcs. / Pkt.
C-UFB- 5DC/E	2782300	10
C-UFB-24DC/E	2782313	10
C-UFB- 5DC/E 75	2763604	10

Ordering data		
Type	Order No.	Pcs. / Pkt.
C-UFB- 5DC	2797858	10
C-UFB-24DC	2797861	10

BNC connector , single-level, for mounting on NS 32 or NS 35/7.5	
50 Ω wave impedance	BNC-V 50
75 Ω wave impedance	BNC-V 75
BNC connector , double-level, for mounting on NS 32 or NS 35/7.5	
50 Ω wave impedance	BNC-DV 50
75 Ω wave impedance	BNC-DV 75

Accessories		
BNC-V 50	2805041	10
BNC-V 75	2805070	10
BNC-DV 50	2805038	10
BNC-DV 75	2805083	10

Accessories		
BNC-V 50	2805041	10
BNC-DV 50	2805038	10

BNC connectors

- For coaxial cables
- DIN rail-mountable and can be aligned
- Single or double-level
- Can be labeled individually
- With isolated structure on the DIN rail



BNC connector, single-level



BNC connector, double-level

General data	
Temperature range	
Degree of protection according to IEC 60529/EN 60529	
Connection method	
Description	
BNC connector , single-level, for mounting on NS 32 or NS 35/7.5	
50 Ω wave impedance	
75 Ω wave impedance	
BNC connector , double-level, for mounting on NS 32 or NS 35/7.5	
50 Ω wave impedance	
75 Ω wave impedance	
Terminal marking , can be labeled according to customer specifications	
4-section	

Total width 22 mm

Technical data			
BNC-V 50	BNC-V 75		
	125°C		
	IP20		
50 Ω BNC	75 Ω BNC		
Ordering data			
Type	Order No.	Pcs. / Pkt.	
BNC-V 50	2805041	10	
BNC-V 75	2805070	10	
Accessories			
ZB 22 CUS	0824949	1	

Total width 22 mm

Technical data			
BNC-DV 50	BNC-DV 75		
	125°C		
	IP20		
50 Ω BNC	75 Ω BNC		
Ordering data			
Type	Order No.	Pcs. / Pkt.	
BNC-DV 50	2805038	10	
BNC-DV 75	2805083	10	
Accessories			
ZB 22 CUS	0824949	1	

Surge protection for transceiver stations

Radio and television sets

Protection for antenna inputs of radio and television equipment

C-SAT-BOX

- Protection for antenna inputs in satellite receiver technology
- Use before antenna distributor or multi-switch
- Analog and digital SAT signals
- Terrestrial antenna signals
- Direct wall mounting supported

ADAPTER KOAX TYP F

- F adapter can be plugged on

KBL-SAT/20

- KOAX TYP F connecting cable
- For pitch compensation between C-SAT-BOX and multi-switch

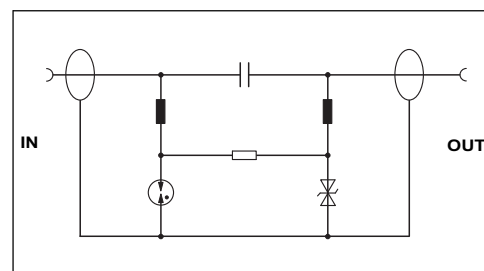
C-TV-SAT and C-TV/HIFI

- Protective adapter for antenna connections
- Use on broadband cable or SAT connection
- TV or F connector

Notes:
Dimensional drawings starting on page 240
Approvals starting on page 252
Attenuation curves, from page 246



For antenna distributor or multi-switch



Technical data

Electrical data	
IEC category / EN type	B2 / C2 / C3 / D1 / C1
Maximum continuous operating voltage U_C	20 V DC / -
Nominal current I_N	400 mA (25°C)
Nominal discharge surge current I_n (8/20) μ s	
	Core-Shield / Core-Ground
Total surge current (8/20) μ s	2.5 kA / 2.5 kA
Output voltage limitation at 1 kV/ μ s	10 kA
	Core-Shield / Core-Ground
Cut-off frequency f_g (3 dB)	≤ 70 V / ≤ 70 V
In a 75 Ω system	Symmetrical / Asymmetrical
General data	
Temperature range	-40°C ... 80°C
Degree of protection according to IEC 60529/EN 60529	IP40
Inflammability class according to UL 94	-
Connection method	F connector
Test standards	IEC 61643-21 / EN 50083 - CLASS A

Ordering data

Description	Type	Order No.	Pcs. / Pkt.
COAXTRAB , protective device for antenna distributors/multi-switches for insertion in the antenna cable	C-SAT-BOX	2880561	1
Adapter , to connect the C-SAT-BOX to antenna distributors with a pitch of 20 mm (e.g., ASTRO, SPAUN)			
Connecting cable , to connect the C-SAT-BOX to the antenna distributor, length: 0.2 m			
COAXTRAB , surge protection adapter	F connector TV connector		



Accessories for C-SAT-BOX

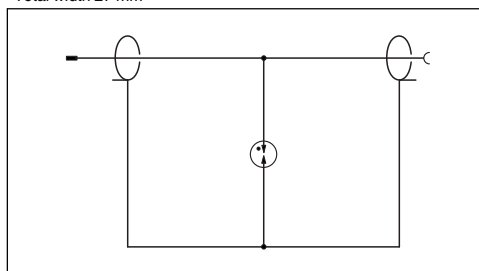


Adapter with F connector



Adapter with TV connector

Total width 27 mm



Technical data

-
-/-
-
-/-
-
-/-
-
-/-
-
-
-
F connector
-

C1 / C2 / C3 / D1
180 V DC / 130 V AC
1.5 A (25°C)

2.5 kA / -
2.5 kA

≤ 600 V / -

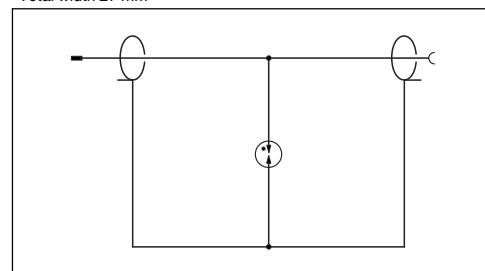
- / > 3 GHz

-25°C ... 75°C
IP20
V0
F connector
IEC 61643-21 / EN 50083 - CLASS A

Ordering data

Type	Order No.	Pcs. / Pkt.
ADAPTER KOAX TYP F	2880972	5
KBL-SAT/20	2880985	5

Total width 27 mm



Technical data

C1 / C2 / C3 / D1
180 V DC / 130 V AC
1.5 A (25°C)

2.5 kA / -
2.5 kA

≤ 600 V / -

- / > 3 GHz

-25°C ... 75°C
IP20
V0
PAL-TV (IEC 169-2)
IEC 61643-21 / EN 50083 - CLASS A

Ordering data

Type	Order No.	Pcs. / Pkt.
C-TV/HIFI	2857002	1

C-TV-SAT

2856993

1

Surge protection for transceiver stations

Radio and television sets

For power supply and antenna inputs

- For termination devices
- Easy operation
- Connection to antenna junction box using separate cable
- Thermal monitoring of the protective circuit
- Green LED - operating indicator for the power supply
- On/off button in the socket strip

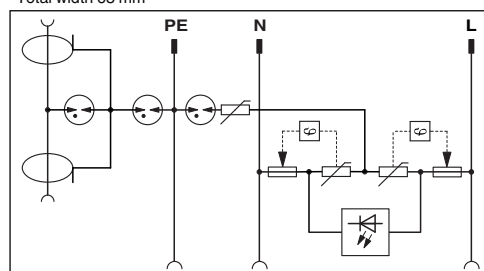
Notes:

Dimensional drawings starting on page 240
Approvals starting on page 252
Attenuation curves, from page 246



For network and TV antennas/cables and SAT systems, with F connector and IEC adapter

Total width 63 mm



Technical data

Electrical data	Mains protection	Data protection
IEC category / EN type	III / T3	C2 / C3 / D1
Nominal voltage U_N	230 V AC	-
Maximum continuous operating voltage U_C	360 V AC (L/N-PE)	50 V AC / 72 V DC
Nominal current I_N	16 A (30°C)	1.5 A (25°C)
Nominal discharge surge current I_n (8/20) μ s		
Combined surge U_{OC}	Core-Shield / Core-Ground 3 kA / 3 kA	2.5 kA / 2.5 kA
Protection level U_p	4 kV	-
Output voltage limitation at 1 kV/ μ s	Core-Shield / Core-Ground ≤ 1.2 kV / ≤ 1.5 kV	≤ 700 V (C2 - 2 kA) / -
Cut-off frequency f_g (3 dB)	Core-Ground / Core-Shield / Shield-Ground - / -	- / ≤ 700 V / ≤ 1 kV
In a 75 Ω system	Core-Shield	> 2.5 GHz
General data		
Temperature range		-25°C ... 75°C
Degree of protection according to IEC 60529/EN 60529		IP20 (child-proof)
Inflammability class according to UL 94		V0/HB
Connection method		F connector
Test standards	IEC 61643-1 / EN 61643-11/A11 / VDE 0620-1	IEC 61643-21 / EN 50083 - CLASS A

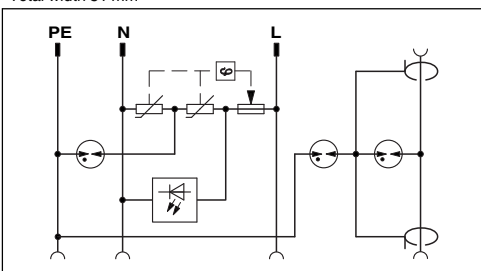
Ordering data

Description	Can be used as typical for the country	Type	Order No.	Pcs. / Pkt.
MAINTRAB , surge protection attachment plug for inserting in a socket for equipment and data interface protection, incl. 1.5 m coaxial cable				
Black	D, A, NL	MNT-TV-SAT D	2882284	1
White	D, A, NL	MNT-TV-SAT D/WH	2882297	1
Black	B, F, CZ, SVK, PL	MNT-TV-SAT B/F	2882307	1
Black	E, P	MNT-TV-SAT E	2882310	1
White	S, FIN, N	MNT-TV-SAT S/WH	2880888	1
COMBITRAB , combination of five ground contact sockets and TV-SAT protection, incl. 1.5 m coaxial cable				
	D, I, NL, E, P			



For network and TV/SAT systems,
with 1.8 m connecting cable and
F connector connection

Total width 81 mm



Technical data

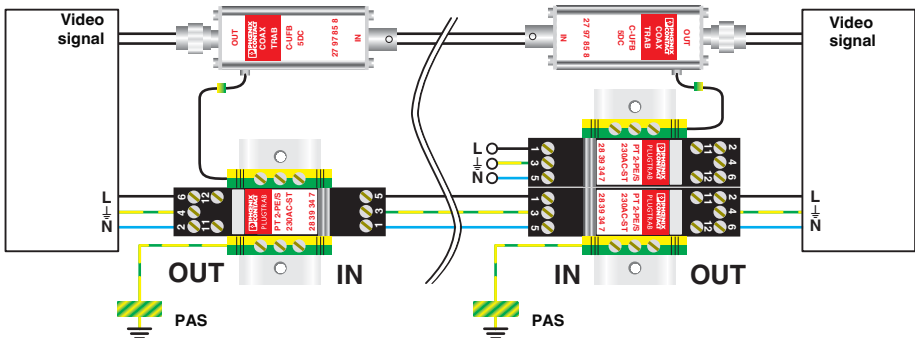
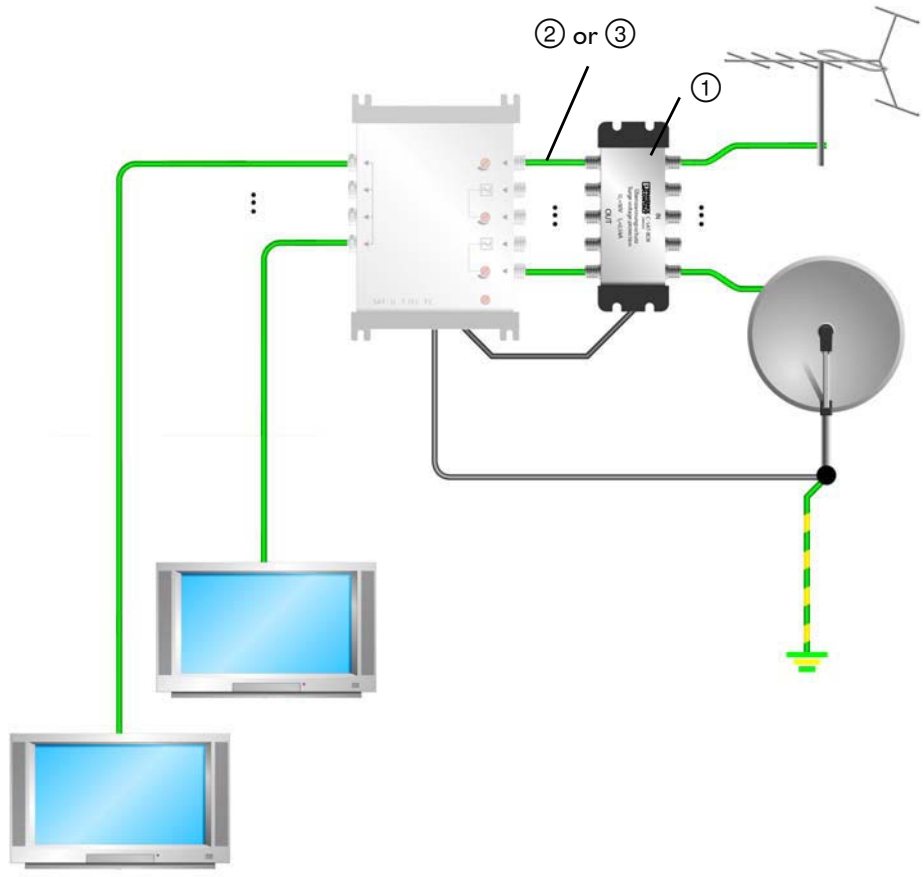
Mains protection	Data protection
III / T3	C2 / C3 / D1
230 V AC	-
260 V AC	50 V AC / 72 V DC
16 A (30°C)	1.5 A (25°C)
1.5 kA / 1.5 kA	2.5 kA / 2.5 kA
4 kV	-
≤ 1.3 kV / ≤ 1.5 kV	- / -
- / -	≤ 1 kV / ≤ 700 V / -
-	1.8 GHz
-20°C ... 75°C	
IP20	
V0	
F connector	
IEC 61643-1 / EN 61643-11/A11	IEC 61643-21

Ordering data

Type	Order No.	Pcs. / Pkt.
CBT-TV-SAT	2857303	1

Surge protection for transceiver systems

Applications

Description	Application
<p>Protection of video signals, including device protection for the power supply unit</p> <p>Material: 2 x C-UFB-5DC 3 x PT 2-PE/S-230AC</p>	<p>Video camera in exposed location</p> <p>Video control center</p> 
<p>Protection of TV equipment</p> <p>Material: 1 x C-SAT-BOX ① 5 x ADAPTER KOAX TYP F ② or 5 x KBL-SAT/20 ③</p>	
<p>MNT-TV-SAT</p>	