

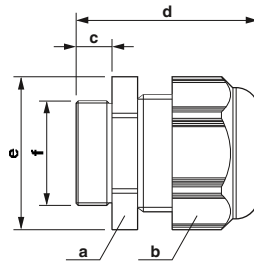
Installation and mounting material

Cable glands

Plastic cable glands, metric, EN 60423

new

- Material: polyamide 6
- UV-resistant: f1 according to UL 746C
- Cable seal: CR
- Ambient temperature: -20°C ... +100°C
- Degree of protection: IP66/IP68
- Strain relief: integrated according to EN 50262



Plastic cable glands

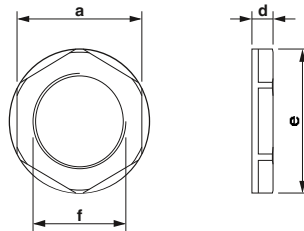
Thread type	Clamping area [mm]	Dimensions [mm]					Thread
		a	b	c	d	e	
M12 x 1.5	3.00 - 6.50	15.00	15.00	8.00	32.00	17.10	M12
M16 x 1.5	4.00 - 8.00	19.00	19.00	8.00	43.00	25.00	M16
M16 x 1.5	5.00 - 10.00	22.00	22.00	10.00	39.00	25.00	M16
M20 x 1.5	6.00 - 12.00	24.00	24.00	10.00	42.00	27.80	M20
M20 x 1.5	10.00 - 14.00	27.00	27.00	10.00	43.00	27.80	M20
M25 x 1.5	11.00 - 17.00	29.00	29.00	8.00	43.00	33.50	M25
M25 x 1.5	13.00 - 18.00	33.00	33.00	10.00	45.50	33.50	M25
M32 x 1.5	15.00 - 21.00	36.00	36.00	10.00	50.00	40.90	M32
M32 x 1.5	18.00 - 25.00	42.00	42.00	15.00	56.00	40.90	M32
M40 x 1.5	19.00 - 28.00	46.00	46.00	10.00	55.00	52.00	M40
M40 x 1.5	22.00 - 32.00	53.00	53.00	18.00	55.00	52.00	M40
M50 x 1.5	30.00 - 36.00	60.00	60.00	18.00	71.00	67.70	M50
M63 x 1.5	34.00 - 44.00	65.00	65.00	18.00	75.00	72.20	M63

Ordering data					
Order No.	Pcs. / Pkt.	Order No.	Pcs. / Pkt.	Order No.	Pcs. / Pkt.
light gray		silver-gray		black	
1417652	10	1411123	10	1411131	10
1424470	10	1424475	10	1424480	10
1417653	10	1411124	10	1411132	10
1414568	5	1411125	5	1411133	5
1424471	5	1424476	5	1424481	5
1417654	5	1411126	5	1411134	5
1424472	5	1424477	5	1424482	5
1417655	5	1411127	5	1411136	5
1424473	5	1424478	5	1424483	5
1417656	5	1411128	5	1411137	5
1424474	5	1424479	5	1424484	5
1417657	1	1411129	1	1411138	1
1417658	1	1411130	1	1411139	1

Plastic counter nuts, metric, EN 60423

new

- Material: polyamide 6
- Ambient temperature: -20°C ... +100°C



Plastic counter nuts

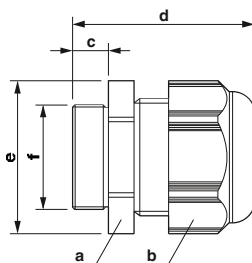
Thread type	Clamping area [mm]	Dimensions [mm]					Thread
		a	b	c	d	e	
M12	-	18.00	-	-	5.00	19.50	M12
M16	-	22.00	-	-	5.00	24.20	M16
M20	-	26.00	-	-	6.00	28.60	M20
M25	-	32.00	-	-	6.00	35.00	M25
M32	-	41.00	-	-	7.00	46.10	M32
M40	-	50.00	-	-	7.00	55.30	M40
M50	-	60.00	-	-	8.00	66.10	M50
M63	-	75.00	-	-	8.00	82.50	M63

Ordering data					
Order No.	Pcs. / Pkt.	Order No.	Pcs. / Pkt.	Order No.	Pcs. / Pkt.
light gray		silver-gray		black	
1417659	10	1411205	10	1411213	10
1417660	10	1411206	10	1411214	10
1414570	5	1411207	5	1411215	5
1417661	5	1411208	5	1411216	5
1417662	5	1411209	5	1411217	5
1417664	5	1411210	5	1411218	5
1417665	5	1411211	5	1411219	5
1417666	5	1411212	5	1411220	5

**Plastic cable glands,
Pg, EN 40430**

new

- Material: polyamide 6
- UV-resistant: f1 according to UL 746C
- Cable seal: CR
- Ambient temperature:
-20°C ... +100°C
- Degree of protection: IP66/IP68
- Strain relief: integrated



Plastic cable glands

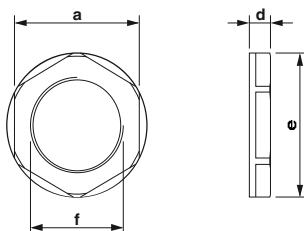
Thread type	Clamping area [mm]	Dimensions [mm]					Thread
		a	b	c	d	e	
Pg7	3.00 - 6.50	15.00	15.00	8.00	32.00	17.10	Pg7
Pg9	4.00 - 8.00	19.00	19.00	8.00	36.00	21.60	Pg9
Pg11	5.00 - 10.00	22.00	22.00	8.00	38.00	25.00	Pg11
Pg13.5	6.00 - 12.00	24.00	24.00	10.00	40.00	27.80	Pg13.5
Pg16	10.00 - 14.00	27.00	27.00	10.00	44.00	30.80	Pg16
Pg21	13.00 - 18.00	33.00	33.00	11.00	49.00	37.80	Pg21
Pg29	18.00 - 25.00	42.00	42.00	11.00	53.00	48.00	Pg29
Pg36	22.00 - 32.00	53.00	53.00	13.00	65.00	60.00	Pg36
Pg42	30.00 - 38.00	60.00	60.00	13.00	65.00	67.70	Pg42
Pg48	34.00 - 44.00	65.00	65.00	14.00	68.00	72.20	Pg48

Ordering data					
Order No.	Pcs. / Pkt.	Order No.	Pcs. / Pkt.	Order No.	Pcs. / Pkt.
light gray		silver-gray		black	
1424485	10	1411140	10	1424495	10
1424486	10	1411141	10	1424496	10
1424487	5	1411142	5	1424497	5
1424488	5	1411143	5	1424498	5
1424489	5	1411144	5	1424499	5
1424490	5	1411145	5	1424500	5
1424491	5	1411146	5	1424501	5
1424492	5	1411147	5	1424502	5
1424493	1	1411149	1	1424503	1
1424494	1	1411150	1	1424504	1

**Plastic counter nuts,
Pg, EN 40430**

new

- Material: polyamide 6
- Ambient temperature:
-20°C ... +100°C



Plastic counter nuts

Thread type	Clamping area [mm]	Dimensions [mm]					Thread
		a	b	c	d	e	
Pg7	-	19.00	-	-	5.00	21.00	Pg7
Pg9	-	22.00	-	-	5.00	24.00	Pg9
Pg11	-	24.00	-	-	5.00	26.00	Pg11
Pg13.5	-	27.00	-	-	6.00	29.00	Pg13.5
Pg16	-	30.00	-	-	6.00	33.00	Pg16
Pg21	-	36.00	-	-	7.00	39.00	Pg21
Pg29	-	46.00	-	-	7.00	50.00	Pg29
Pg36	-	60.00	-	-	8.00	66.00	Pg36
Pg42	-	65.00	-	-	8.00	73.00	Pg42
Pg48	-	70.00	-	-	8.00	78.00	Pg48

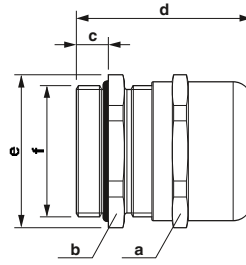
Ordering data					
Order No.	Pcs. / Pkt.	Order No.	Pcs. / Pkt.	Order No.	Pcs. / Pkt.
light gray		silver-gray		black	
1424548	10	1411221	10	1424558	10
1424549	10	1411222	10	1424559	10
1424550	5	1411223	5	1424560	5
1424551	5	1411224	5	1424561	5
1424552	5	1411225	5	1424562	5
1424553	5	1411226	5	1424563	5
1424554	5	1411227	5	1424564	5
1424555	5	1411228	5	1424565	5
1424556	5	1411229	5	1424566	5
1424557	5	1411230	5	1424567	5

Installation and mounting material

Cable glands

Brass cable glands, metric, EN 60423

- Material: brass, nickel-plated
- Cable seal: CR
- O-ring: NBR
- Ambient temperature: -20°C ... +100°C
- Degree of protection: IP66/IP68/IP69
- Strain relief: integrated according to EN 50262



new



Brass cable gland

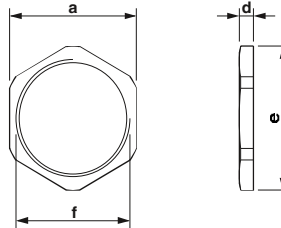
Notes:
For alternative clamping ranges, see phoenixcontact.net/products

Thread type	Color	Clamping area [mm]	Dimensions [mm]					Thread
			a	b	c	d	e	
M12 x 1.5	silver	3.00 - 6.50	14.00	14.00	6.00	27.00	15.50	M12
M16 x 1.5	silver	4.00 - 8.00	17.00	18.00	7.00	30.00	22.00	M16
M16 x 1.5	silver	5.00 - 10.00	20.00	20.00	7.00	34.00	22.00	M16
M20 x 1.5	silver	6.00 - 12.00	22.00	22.00	8.00	37.00	24.50	M20
M25 x 1.5	silver	10.00 - 14.00	24.00	27.00	8.00	36.00	30.00	M25
M25 x 1.5	silver	11.00 - 17.00	27.00	27.00	8.00	40.00	30.00	M25
M32 x 1.5	silver	13.00 - 18.00	30.00	34.00	9.00	42.00	37.00	M32
M32 x 1.5	silver	15.00 - 21.00	34.00	34.00	8.00	43.00	37.00	M32
M40 x 1.5	silver	18.00 - 25.00	40.00	43.00	9.00	47.00	48.40	M40
M40 x 1.5	silver	19.00 - 28.00	43.00	43.00	9.00	53.00	48.40	M40
M50 x 1.5	silver	22.00 - 32.00	50.00	55.00	9.00	58.00	64.00	M50
M50 x 1.5	silver	27.00 - 38.00	58.00	58.00	9.00	61.00	64.00	M50
M63 x 1.5	silver	34.00 - 44.00	64.00	68.00	14.00	65.00	70.00	M63
M63 x 1.5	silver	37.00 - 53.00	75.00	75.00	10.00	60.00	70.00	M63

Ordering data		
Type	Order No.	Pcs. / Pkt.
G-INS-M12-S68N-NNES-S	1411160	10
G-INS-M16-T68N-NNES-S	1424526	10
G-INS-M16-S68N-NNES-S	1411162	10
G-INS-M20-S68N-NNES-S	1411163	5
G-INS-M25-S68N-NNES-S	1424527	5
G-INS-M25-M68N-NNES-S	1411165	5
G-INS-M32-S68N-NNES-S	1424528	5
G-INS-M32-M68N-NNES-S	1411166	5
G-INS-M40-S68N-NNES-S	1424529	5
G-INS-M40-M68N-NNES-S	1411167	5
G-INS-M50-M68N-NNES-S	1424530	1
G-INS-M50-L68N-NNES-S	1411168	1
G-INS-M63-L68N-NNES-S	1411169	1
G-INS-M63-E68N-NNES-S	1424531	1

Brass counter nuts, metric, EN 60423

- Material: brass, nickel-plated
- Ambient temperature: -70°C ... +220°C



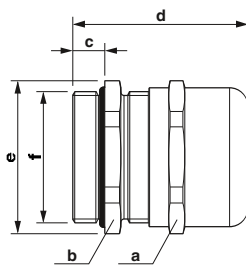
Brass counter nut

Thread type	Color	Clamping area [mm]	Dimensions [mm]					Thread
			a	b	c	d	e	
M12	silver	-	15.00	-	-	2.80	16.50	M12
M16	silver	-	19.00	-	-	2.80	21.00	M16
M20	silver	-	24.00	-	-	3.00	27.00	M20
M25	silver	-	30.00	-	-	3.50	33.50	M25
M32	silver	-	36.00	-	-	4.00	40.00	M32
M40	silver	-	46.00	-	-	5.00	50.00	M40
M50	silver	-	57.00	-	-	5.00	65.00	M50
M63	silver	-	70.00	-	-	6.00	75.00	M63

Ordering data		
Type	Order No.	Pcs. / Pkt.
A-INL-M12-N-S	1411240	100
A-INL-M16-N-S	1411241	100
A-INL-M20-N-S	1411242	100
A-INL-M25-N-S	1411243	100
A-INL-M32-N-S	1411244	100
A-INL-M40-N-S	1411246	50
A-INL-M50-N-S	1411247	25
A-INL-M63-N-S	1411248	25

**Brass cable glands,
Pg, EN 40430**

- Material: brass, nickel-plated
- Cable seal: CR
- O-ring: NBR
- Ambient temperature:
-20°C ... +100°C
- Degree of protection: IP68/IP69
- Strain relief: integrated



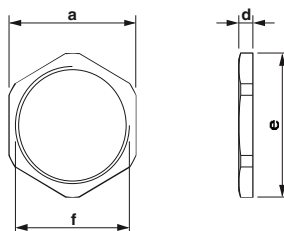
Brass cable gland

Thread type	Color	Clamping area [mm]	Dimensions [mm]					Thread
			a	b	c	d	e	
Pg7	silver	3.00 - 6.50	14.00	14.00	6.00	27.00	15.50	Pg7
Pg9	silver	4.00 - 8.00	17.00	17.00	6.00	28.00	18.90	Pg9
Pg11	silver	5.00 - 10.00	20.00	20.00	6.00	21.00	22.00	Pg11
Pg13.5	silver	6.00 - 12.00	22.00	22.00	6.50	30.00	24.50	Pg13.5
Pg16	silver	10.00 - 14.00	24.00	24.00	6.50	33.00	26.80	Pg16
Pg21	silver	13.00 - 18.00	30.00	30.00	7.20	38.00	33.00	Pg21
Pg29	silver	18.00 - 25.00	40.00	40.00	8.00	46.00	44.50	Pg29
Pg36	silver	22.00 - 32.00	50.00	50.00	9.00	57.00	55.50	Pg36
Pg42	silver	30.00 - 38.00	58.00	58.00	12.00	60.00	64.00	Pg42
Pg48	silver	34.00 - 44.00	64.00	64.00	14.00	63.00	70.00	Pg48

Ordering data		
Type	Order No.	Pcs. / Pkt.
G-INS-PG7-S68N-NNES-S	1411170	10
G-INS-PG9-S68N-NNES-S	1411171	10
G-INS-PG11-S68N-NNES-S	1411172	5
G-INS-PG13,5-S68N-NNES-S	1411173	5
G-INS-PG16-S68N-NNES-S	1411174	5
G-INS-PG21-M68N-NNES-S	1411175	5
G-INS-PG29-M68N-NNES-S	1411176	5
G-INS-PG36-L68N-NNES-S	1411178	5
G-INS-PG42-L68N-NNES-S	1411179	1
G-INS-PG48-L68N-NNES-S	1411181	1

**Brass counter nuts,
Pg, EN 40430**

- Material: brass, nickel-plated
- Ambient temperature:
-70°C ... +220°C



Brass counter nut

Thread type	Color	Clamping area [mm]	Dimensions [mm]					Thread
			a	b	c	d	e	
Pg7	silver	-	15.00	-	-	2.80	16.50	Pg7
Pg9	silver	-	18.00	-	-	2.80	20.00	Pg9
Pg11	silver	-	21.00	-	-	3.00	24.00	Pg11
Pg13.5	silver	-	23.00	-	-	3.00	26.00	Pg13.5
Pg16	silver	-	26.00	-	-	3.00	29.00	Pg16
Pg21	silver	-	32.00	-	-	3.50	36.00	Pg21
Pg29	silver	-	41.00	-	-	4.00	45.00	Pg29
Pg36	silver	-	51.00	-	-	5.00	56.00	Pg36
Pg42	silver	-	60.00	-	-	5.00	65.00	Pg42
Pg48	silver	-	64.00	-	-	5.50	69.00	Pg48

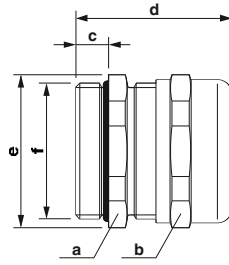
Ordering data		
Type	Order No.	Pcs. / Pkt.
A-INL-PG7-N-S	1411255	100
A-INL-PG9-N-S	1411256	100
A-INL-PG11-N-S	1411257	100
A-INL-PG13,5-N-S	1411259	100
A-INL-PG16-N-S	1411260	100
A-INL-PG21-N-S	1411262	100
A-INL-PG29-N-S	1411263	50
A-INL-PG36-N-S	1411264	50
A-INL-PG42-N-S	1411265	25
A-INL-PG48-N-S	1411266	25

Installation and mounting material

Cable glands

Brass EMC cable glands, metric, EN 60423

- Material: brass, nickel-plated
- Cable seal: CR
- O-ring: NBR
- Ambient temperature: -20°C ... +100°C
- Degree of protection: IP66/IP68
- Strain relief: integrated according to EN 50262



Brass EMC cable gland

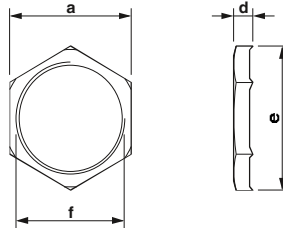
Thread type	Color	Clamping area [mm]	Dimensions [mm]					Thread
			a	b	c	d	e	
M12 x 1.5	silver	3.00 - 6.50	14.00	14.00	6.00	28.00	15.50	M12
M16 x 1.5	silver	5.00 - 9.00	17.00	17.00	5.00	30.00	19.00	M16
M20 x 1.5	silver	9.00 - 13.00	22.00	22.00	6.00	33.00	24.00	M20
M25 x 1.5	silver	11.00 - 16.00	27.00	27.00	7.00	36.00	30.00	M25
M32 x 1.5	silver	14.00 - 21.00	34.00	34.00	8.00	38.00	36.00	M32
M40 x 1.5	silver	19.00 - 27.00	43.00	43.00	8.00	41.00	46.00	M40
M50 x 1.5	silver	24.00 - 35.00	55.00	55.00	9.00	49.00	60.00	M50
M63 x 1.5	silver	32.00 - 42.00	65.00	65.00	10.00	52.00	70.00	M63

Ordering data

Type	Order No.	Pcs. / Pkt.
G-INSEC-M12-S68N-NCRS-S	1411187	10
G-INSEC-M16-S68N-NCRS-S	1411188	10
G-INSEC-M20-S68N-NCRS-S	1411189	5
G-INSEC-M25-S68N-NCRS-S	1411190	5
G-INSEC-M32-M68N-NCRS-S	1411191	5
G-INSEC-M40-M68N-NCRS-S	1411192	5
G-INSEC-M50-L68N-NCRS-S	1411193	1
G-INSEC-M63-L68N-NCRS-S	1411194	1

Brass counter nuts, metric, EN 60423, ribbed

- Material: brass, nickel-plated
- Ambient temperature: -70°C ... +220°C
- Version: ribbed



Brass counter nut

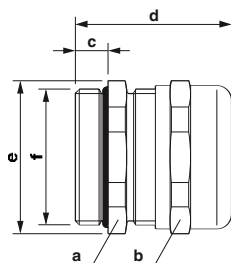
Thread type	Color	Clamping area [mm]	Dimensions [mm]					Thread
			a	b	c	d	e	
M12	silver	-	15.00	-	-	4.70	16.50	M12
M16	silver	-	19.00	-	-	4.70	21.00	M16
M20	silver	-	24.00	-	-	4.70	27.00	M20
M25	silver	-	30.00	-	-	5.20	33.50	M25
M32	silver	-	36.00	-	-	5.70	40.00	M32
M40	silver	-	46.00	-	-	6.50	50.00	M40
M50	silver	-	60.00	-	-	6.50	65.00	M50
M63	silver	-	70.00	-	-	7.00	75.00	M63

Ordering data

Type	Order No.	Pcs. / Pkt.
A-INLE-M12-N-S	1411267	100
A-INLE-M16-N-S	1411268	100
A-INLE-M20-N-S	1411269	100
A-INLE-M25-N-S	1411270	50
A-INLE-M32-N-S	1411271	50
A-INLE-M40-N-S	1411272	50
A-INLE-M50-N-S	1411273	10
A-INLE-M63-N-S	1411274	10

**Brass EMC cable glands,
Pg, EN 40430**

- Material: brass, nickel-plated
- Cable seal: CR
- O-ring: NBR
- Ambient temperature:
-20°C ... +100°C
- Degree of protection: IP66/IP68
- Strain relief: integrated



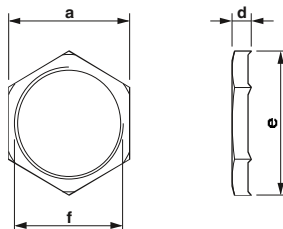
Brass EMC cable gland

Thread type	Color	Clamping area [mm]	Dimensions [mm]					Thread
			a	b	c	d	e	
Pg7	silver	3.00 - 6.50	14.00	14.00	6.00	27.00	15.50	Pg7
Pg9	silver	4.00 - 8.00	17.00	17.00	6.00	29.00	18.90	Pg9
Pg11	silver	5.00 - 10.00	20.00	20.00	6.00	30.00	22.00	Pg11
Pg13.5	silver	6.00 - 12.00	22.00	22.00	6.50	30.00	24.50	Pg13.5
Pg16	silver	10.00 - 14.00	24.00	24.00	6.50	33.00	26.80	Pg16
Pg21	silver	13.00 - 18.00	30.00	30.00	7.20	38.00	33.00	Pg21
Pg29	silver	18.00 - 25.00	40.00	40.00	8.00	47.00	44.50	Pg29
Pg36	silver	22.00 - 32.00	50.00	50.00	9.00	57.00	55.50	Pg36
Pg42	silver	30.00 - 38.00	58.00	58.00	12.00	60.00	64.00	Pg42
Pg48	silver	34.00 - 44.00	64.00	64.00	14.00	65.00	70.00	Pg48

Ordering data		
Type	Order No.	Pcs. / Pkt.
G-INSEC-PG7-S68N-NNES-S	1411195	10
G-INSEC-PG9-S68N-NNES-S	1411196	10
G-INSEC-PG11-S68N-NNES-S	1411197	5
G-INSEC-PG13.5-S68N-NNES-S	1411198	5
G-INSEC-PG16-S68N-NNES-S	1411199	5
G-INSEC-PG21-M68N-NNES-S	1411200	5
G-INSEC-PG29-M68N-NNES-S	1411201	5
G-INSEC-PG36-L68N-NNES-S	1411202	5
G-INSEC-PG42-L68N-NNES-S	1411203	1
G-INSEC-PG48-L68N-NNES-S	1411204	1

**Brass counter nuts,
Pg, EN 40430, ribbed**

- Material: brass, nickel-plated
- Ambient temperature:
-70°C ... +220°C
- Version: ribbed



Brass counter nut

Thread type	Color	Clamping area [mm]	Dimensions [mm]					Thread
			a	b	c	d	e	
Pg7	silver	-	15.00	-	-	4.70	16.50	Pg7
Pg9	silver	-	18.00	-	-	4.70	20.00	Pg9
Pg11	silver	-	21.00	-	-	4.70	24.00	Pg11
Pg13.5	silver	-	23.00	-	-	4.70	26.00	Pg13.5
Pg16	silver	-	26.00	-	-	4.70	29.00	Pg16
Pg21	silver	-	32.00	-	-	5.20	36.00	Pg21
Pg29	silver	-	41.00	-	-	5.70	45.00	Pg29
Pg36	silver	-	51.00	-	-	6.50	56.00	Pg36

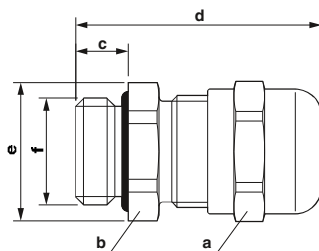
Ordering data		
Type	Order No.	Pcs. / Pkt.
A-INLE-PG7-N-S	1411275	100
A-INLE-PG9-N-S	1411276	100
A-INLE-PG11-N-S	1411277	100
A-INLE-PG13.5-N-S	1411278	100
A-INLE-PG16-N-S	1411279	100
A-INLE-PG21-N-S	1411280	50
A-INLE-PG29-N-S	1411281	50
A-INLE-PG36-N-S	1411282	50

Installation and mounting material

Cable glands

Stainless steel screw connections, metric, EN 60423

- Material: stainless steel
- Cable seal: CR
- O-ring: NBR
- Ambient temperature: -40°C ... +100°C
- Degree of protection: IP66/IP68/IP69
- Strain relief: integrated according to EN 50262



new



Stainless steel cable gland

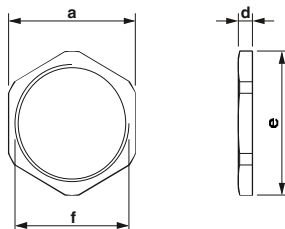
Thread type	Color	Clamping area [mm]	Dimensions [mm]					Thread
			a	b	c	d	e	
M12 x 1.5	silver	3.00 - 6.50	14.00	14.00	6.00	33.50	15.50	M12
M16 x 1.5	silver	5.00 - 10.00	22.00	22.00	7.00	35.00	24.50	M16
M20 x 1.5	silver	6.00 - 12.00	22.00	22.00	8.00	33.00	24.50	M20
M25 x 1.5	silver	11.00 - 17.00	27.00	27.00	8.00	40.00	29.80	M25
M32 x 1.5	silver	15.00 - 21.00	36.00	36.00	8.00	45.00	38.90	M32
M40 x 1.5	silver	19.00 - 28.00	46.00	46.00	9.00	52.50	51.50	M40

Ordering data

Type	Order No.	Pcs. / Pkt.
G-INS-M12-M68N-SNES-S	1424541	1
G-INS-M16-M68N-SNES-S	1424542	1
G-INS-M20-M68N-SNES-S	1424543	1
G-INS-M25-M68N-SNES-S	1424544	1
G-INS-M32-M68N-SNES-S	1424545	1
G-INS-M40-M68N-SNES-S	1424546	1

Stainless steel lock nuts, metric, EN 60423

- Material: stainless steel
- Ambient temperature: -70°C ... +220°C



Stainless steel counter nut

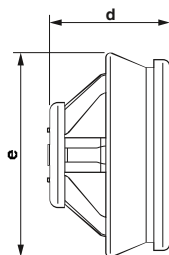
Thread type	Color	Clamping area [mm]	Dimensions [mm]					Thread
			a	b	c	d	e	
M12	silver	-	15.00	-	-	2.80	16.50	M12
M16	silver	-	19.00	-	-	2.80	20.90	M16
M20	silver	-	24.00	-	-	3.00	27.00	M20
M25	silver	-	30.00	-	-	3.50	33.50	M25
M32	silver	-	36.00	-	-	4.00	40.00	M32
M40	silver	-	46.00	-	-	5.00	50.00	M40
M50	silver	-	55.00	-	-	5.00	65.00	M50
M63	silver	-	70.00	-	-	6.00	75.00	M63

Ordering data

Type	Order No.	Pcs. / Pkt.
A-INL-M12-S-S	1425175	10
A-INL-M16-S-S	1425176	10
A-INL-M20-S-S	1411249	10
A-INL-M25-S-S	1411250	10
A-INL-M32-S-S	1411251	5
A-INL-M40-S-S	1411252	5
A-INL-M50-S-S	1411253	2
A-INL-M63-S-S	1411254	1

Membrane screw connections

- Material: polypropylene
- For panel thickness of 0.8 mm ... 3.5 mm
- UV-resistant
- Ambient temperature:
-40°C ... +65°C
- Degree of protection: IP66/IP67



Membrane screw connection

Thread type	Color	Clamping area [mm]
M16	light gray	4.00 - 10.00
M20	light gray	6.00 - 13.00
M25	light gray	9.00 - 17.00

Dimensions [mm]					Thread
a	b	c	d	e	f
-	-	8.00	15.00	32.00	M16
-	-	8.00	15.00	34.00	M20
-	-	8.00	15.00	40.00	M25

Ordering data		
Type	Order No.	Pcs. / Pkt.
MG-INC-M16-S67L-PTES-LG	1415186	20
MG-INC-M20-S67L-PTES-LG	1415187	20
MG-INC-M25-M67L-PTES-LG	1415188	20

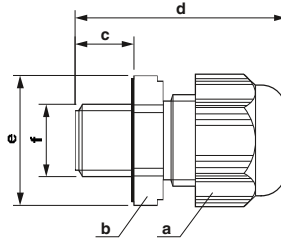
Installation and mounting material

Cable glands

Plastic pressure compensation screw connections, metric, EN 60423

new

- Reduces the formation of condensation
- Material: polyamide
- Cable seal: CR
- Flat gasket: NBR
- Ambient temperature: -20°C ... +100°C
- Degree of protection: IP66/IP67



Plastic pressure compensation screw connections

Notes:
For counter nuts, see page 694

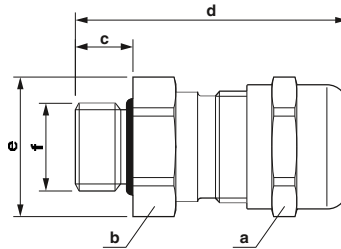
Thread type	Clamping area [mm]	Dimensions [mm]					Thread
		a	b	c	d	e	
M12 x 1.5	4.00 - 8.00	19.00	19.00	8.00	33.00	-	M12
M16 x 1.5	4.00 - 8.00	19.00	19.00	10.00	35.50	-	M16
M20 x 1.5	6.00 - 12.00	24.00	24.00	10.00	40.00	-	M20

Ordering data			
Order No.	Pcs. / Pkt.	Order No.	Pcs. / Pkt.
light gray		black	
1424532	5	1424535	5
1424533	5	1424536	5
1424534	5	1424537	5

Brass pressure compensation screw connections, metric, EN 60423

new

- Reduces the formation of condensation
- Material: brass, nickel-plated
- Cable seal: CR
- Flat gasket: CR
- Ambient temperature: -20°C ... +100°C
- Degree of protection: IP66/IP67



Brass pressure compensation screw connection

Notes:
For counter nuts, see page 700

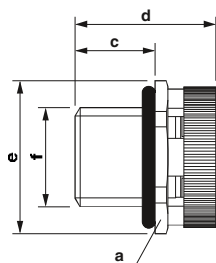
Thread type	Color	Clamping area [mm]	Dimensions [mm]					Thread
			a	b	c	d	e	
M12 x 1.5	silver	4.00 - 8.00	17.00	17.00	6.00	36.50	-	M12
M16 x 1.5	silver	4.00 - 8.00	17.00	17.00	5.00	32.00	-	M16
M20 x 1.5	silver	6.00 - 12.00	22.00	22.00	8.00	35.00	-	M20

Ordering data		
Type	Order No.	Pcs. / Pkt.
G-INVEN-M12-M67N-NNES-S	1424538	1
G-INVEN-M16-M67N-NNES-S	1424539	1
G-INVEN-M20-M67N-NNES-S	1424540	1

Plastic pressure compensation elements, metric, EN 60423

Reduces the formation of condensation

- Material: polyamide
- O-ring: NBR
- Ambient temperature: -20°C ... +100°C
- Degree of protection: IP66/IP67/IP69



Plastic pressure compensation elements

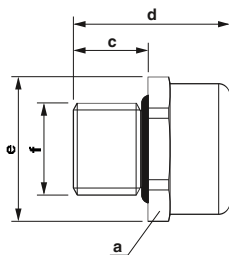
Thread type	Clamping area [mm]	Dimensions [mm]					Thread
		a	b	c	d	e	
M12 x 1.5	-	17.00	-	10.00	17.50	18.50	M12

Ordering data			
Order No.	Pcs. / Pkt.	Order No.	Pcs. / Pkt.
light gray		black	
1415222	5	1415223	5

Stainless steel pressure compensation element, metric, EN 60423

Reduces the formation of condensation

- Material: stainless steel
- O-ring: NBR
- Ambient temperature: -20°C ... +100°C
- Degree of protection: IP66/IP67/IP69



Stainless steel pressure compensation element

Thread type	Color	Clamping area [mm]	Dimensions [mm]					Thread
			a	b	c	d	e	
M12 x 1.5	silver	-	17.00	-	10.00	21.00	18.50	M12

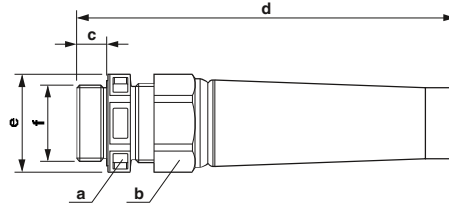
Ordering data		
Type	Order No.	Pcs. / Pkt.
A-INB-M12-69KN-S-S	1415224	5

Installation and mounting material

Cable glands

Plastic cable glands with bend protection, metric, EN 60423

- Material: polyamide
- Flat gasket: EPDM
- Cable seal: EPDM
- O-ring: EPDM
- Ambient temperature: -40°C ... +100°C
- Degree of protection: IP68/IP69



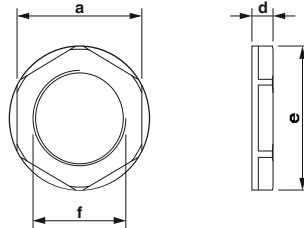
Plastic cable glands with bend protection

Thread type	Clamping area [mm]	Dimensions [mm]					Thread
		a	b	c	d	e	
M12 x 1.5	3.00 - 7.00	16.00	16.00	9.00	72.00	18.00	M12
M16 x 1.5	4.50 - 10.00	20.00	20.00	9.00	82.00	22.00	M16
M20 x 1.5	6.00 - 13.00	24.00	24.00	12.00	103.00	27.00	M20
M25 x 1.5	9.00 - 17.00	29.00	29.00	12.00	113.00	32.00	M25
M32 x 1.5	13.00 - 21.00	36.00	36.00	12.00	138.00	40.00	M32

Ordering data			
Order No.	Pcs. / Pkt.	Order No.	Pcs. / Pkt.
light gray		black	
1415171	10	1415177	10
1415172	10	1415178	10
1415174	10	1415179	10
1415175	10	1415180	10
1415176	5	1415181	5

Plastic counter nuts, metric, EN 60423

- Material: polyamide 6
- Ambient temperature: -20°C ... +100°C



new



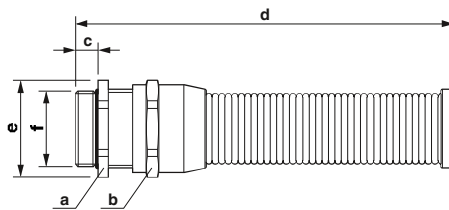
Plastic counter nuts

Thread type	Clamping area [mm]	Dimensions [mm]					Thread
		a	b	c	d	e	
M12	-	18.00	-	-	5.00	19.50	M12
M16	-	22.00	-	-	5.00	24.20	M16
M20	-	26.00	-	-	6.00	28.60	M20
M25	-	32.00	-	-	6.00	35.00	M25
M32	-	41.00	-	-	7.00	46.10	M32

Ordering data			
Order No.	Pcs. / Pkt.	Order No.	Pcs. / Pkt.
light gray		black	
1417659	10	1411213	10
1417660	10	1411214	10
1414570	5	1411215	5
1417661	5	1411216	5
1417662	5	1411217	5

Brass cable glands with bend protection, metric, EN 60423

- Material: brass, nickel-plated
- Cable seal: EPDM
- O-ring: EPDM
- Ambient temperature: -40°C ... +100°C
- Degree of protection: IP68/IP69



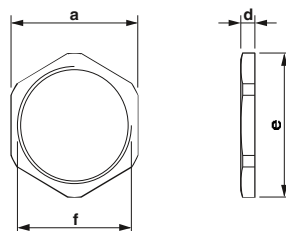
Brass cable gland with bend protection

Thread type	Color	Clamping area [mm]	Dimensions [mm]					Thread
			a	b	c	d	e	
M20 x 1.5	silver	6.00 - 13.00	24.00	24.00	6.00	96.00	27.00	M20
M25 x 1.5	silver	9.00 - 17.00	29.00	29.00	7.00	120.00	32.00	M25
M32 x 1.5	silver	13.00 - 21.00	36.00	36.00	8.00	146.00	40.00	M32
M40 x 1.5	silver	16.00 - 28.00	46.00	46.00	8.00	184.00	51.00	M40

Ordering data		
Type	Order No.	Pcs. / Pkt.
G-INB-M20-S68N-NEPDS-S	1415182	5
G-INB-M25-M68N-NEPDS-S	1415183	5
G-INB-M32-M68N-NEPDS-S	1415184	1
G-INB-M40-M68N-NEPDS-S	1415185	1

Brass counter nuts, metric, EN 60423

- Material: brass, nickel-plated
- Ambient temperature: -70°C ... +220°C



Brass counter nut

Thread type	Color	Clamping area [mm]	Dimensions [mm]					Thread
			a	b	c	d	e	
M20	silver	-	24.00	-	-	3.00	27.00	M20
M25	silver	-	30.00	-	-	3.50	33.50	M25
M32	silver	-	36.00	-	-	4.00	40.00	M32
M40	silver	-	46.00	-	-	5.00	50.00	M40

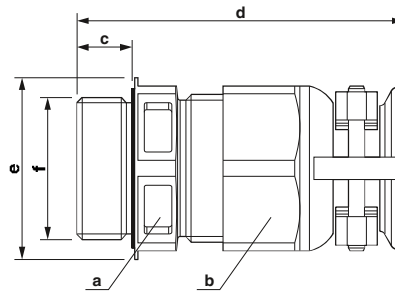
Ordering data		
Type	Order No.	Pcs. / Pkt.
A-INL-M20-N-S	1411242	100
A-INL-M25-N-S	1411243	100
A-INL-M32-N-S	1411244	100
A-INL-M40-N-S	1411246	50

Installation and mounting material

Cable glands

Plastic cable glands with strain relief, metric, EN 60423

- Material: polyamide
- Flat gasket: EPDM
- Cable seal: EPDM
- Ambient temperature: -20°C ... +100°C
- Degree of protection: IP68/IP69



Plastic cable gland with strain relief

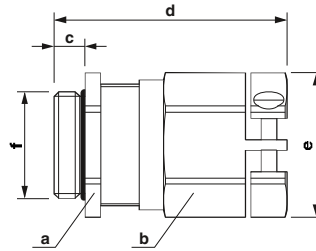
Notes:
For counter nuts, see page 694

Thread type	Color	Clamping area [mm]	Dimensions [mm]					Thread
			a	b	c	d	e	
M20 x 1.5	jet black	6.00 - 13.00	24.00	24.00	10.00	49.00	26.50	M20
M25 x 1.5	jet black	9.00 - 17.00	29.00	29.00	10.00	51.00	32.00	M25
M32 x 1.5	jet black	13.00 - 21.00	36.00	36.00	12.00	57.00	40.00	M32

Ordering data		
Type	Order No.	Pcs. / Pkt.
G-INTRO-M20-S68N-PEPDS-BK	1415189	10
G-INTRO-M25-M68N-PEPDS-BK	1415190	10
G-INTRO-M32-M68N-PEPDS-BK	1415191	5

Brass cable glands with strain relief, metric, EN 60423

- Material: brass, nickel-plated
- Cable seal: EPDM
- O-ring: EPDM
- Ambient temperature: -40°C ... +100°C
- Degree of protection: IP68/IP69



Brass cable gland with strain relief

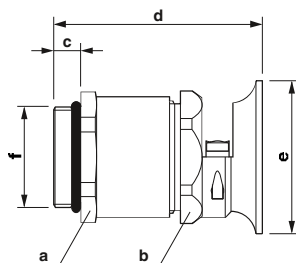
Notes:
For counter nuts, see page 696

Thread type	Color	Clamping area [mm]	Dimensions [mm]					Thread
			a	b	c	d	e	
M20 x 1.5	silver	6.00 - 13.00	24.00	24.00	6.00	37.00	27.00	M20
M25 x 1.5	silver	9.00 - 17.00	29.00	29.00	7.00	42.00	32.00	M25
M32 x 1.5	silver	13.00 - 21.00	36.00	36.00	8.00	45.00	40.00	M32
M40 x 1.5	silver	16.00 - 28.00	46.00	46.00	8.00	54.00	51.00	M40

Ordering data		
Type	Order No.	Pcs. / Pkt.
G-INESR-M20-S68N-NEPDS-S	1415192	5
G-INESR-M25-M68N-NEPDS-S	1415193	5
G-INESR-M32-M68N-NEPDS-S	1415194	1
G-INESR-M40-M68N-NEPDS-S	1415195	1

Brass cable glands with bend protection and strain relief, metric, EN 60423

- Material: brass, nickel-plated
- Cable seal: NBR
- O-ring: NBR
- Ambient temperature: -30°C ... +80°C
- Degree of protection: IP65



Brass cable gland with cable bend protection and strain relief

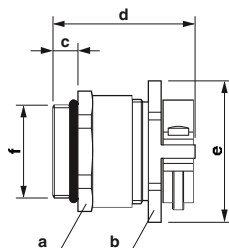
Notes:
For counter nuts, see page 696

Thread type	Color	Clamping area [mm]	Dimensions [mm]					Thread
			a	b	c	d	e	
M20 x 1.5	silver	7.50 - 15.00	24.00	24.00	6.00	40.00	32.00	M20
M25 x 1.5	silver	10.00 - 19.00	30.00	30.00	7.00	44.00	38.00	M25
M32 x 1.5	silver	18.00 - 27.00	41.00	40.00	8.00	51.00	50.00	M32

Ordering data		
Type	Order No.	Pcs. / Pkt.
HC-M-KV-T-M20	1646188	10
HC-M-KV-T-M25	1646191	10
HC-M-KV-T-M32	1646201	10

Brass cable glands with strain relief clamp, metric, EN 60423

- Material: brass, nickel-plated
- Cable seal: NBR
- O-ring: NBR
- Ambient temperature: -30°C ... +80°C
- Degree of protection: IP65



Brass cable gland with strain relief clamp

Notes:
For counter nuts, see page 696

Thread type	Color	Clamping area [mm]	Dimensions [mm]					Thread
			a	b	c	d	e	
M20 x 1.5	silver	7.50 - 15.00	27.00	24.00	6.00	35.00	30.00	M20
M25 x 1.5	silver	10.00 - 19.00	34.00	30.00	7.00	39.00	38.00	M25
M32 x 1.5	silver	18.00 - 27.00	42.00	40.00	8.00	43.00	47.00	M32
M40 x 1.5	silver	24.00 - 33.00	52.00	50.00	8.00	49.00	56.00	M40

Ordering data		
Type	Order No.	Pcs. / Pkt.
HC-M-KV-Z-M20	1646146	10
HC-M-KV-Z-M25	1646159	10
HC-M-KV-Z-M32	1646162	10
HC-M-KV-Z-M40	1646175	10

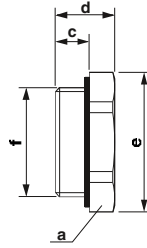
Installation and mounting material

Cable glands

Plastic reducing adapter, metric, EN 60423

new

- Material: polyamide
- Flat gasket: CR
- Ambient temperature: -20°C ... +100°C



Plastic reducing adapter

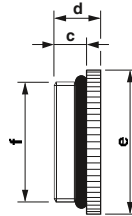
Thread type	Color	Clamping area [mm]	Dimensions [mm]					Thread
			a	b	c	d	e	
M25 x 1.5 / M20 x 1.5	black	-	-	-	8.00	14.00	32.00	M25 / M20
M32 x 1.5 / M20 x 1.5	black	-	-	-	10.00	16.00	40.00	M32 / M20
M32 x 1.5 / M25 x 1.5	black	-	-	-	10.00	16.00	40.00	M32 / M25
M40 x 1.5 / M25 x 1.5	black	-	-	-	10.00	16.00	50.50	M40 / M25
M40 x 1.5 / M32 x 1.5	black	-	-	-	10.00	16.00	50.50	M40 / M32

Ordering data

Type	Order No.	Pcs. / Pkt.
REDUC-K-KV-M25/M20 BK	1411232	10
REDUC-K-KV-M32/M20 BK	1410725	10
REDUC-K-KV-M32/M25 BK	1410712	10
REDUC-K-KV-M40/M25 BK	1410741	10
REDUC-K-KV-M40/M32 BK	1410738	10

Brass reducing adapter, metric, EN 60423

- Material: brass, nickel-plated
- O-ring: NBR
- Ambient temperature: -20°C ... +80°C



Brass reducing adapter

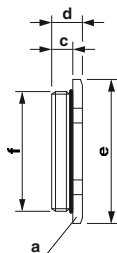
Thread type	Color	Clamping area [mm]	Dimensions [mm]					Thread
			a	b	c	d	e	
M20 x 1.5 / M16 x 1.5	silver	-	-	-	6.50	9.00	24.00	M20 / M16
M25 x 1.5 / M20 x 1.5	silver	-	-	-	7.00	10.00	30.00	M25 / M20
M32 x 1.5 / M25 x 1.5	silver	-	-	-	8.00	11.50	37.00	M32 / M25
M40 x 1.5 / M32 x 1.5	silver	-	-	-	8.00	11.50	43.00	M40 / M32

Ordering data

Type	Order No.	Pcs. / Pkt.
REDUC-M-KV-M20/M16	1647611	10
REDUC-M-KV-M25/M20	1647624	10
REDUC-M-KV-M32/M25	1647637	10
REDUC-M-KV-M40/M32	1647640	10

**Brass reducing adapter,
Pg, EN 40430**

- Material: brass, nickel-plated
- O-ring: NBR
- Ambient temperature:
-20°C ... +80°C

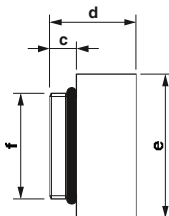


Brass reducing adapter

Thread type	Color	Clamping area [mm]	Dimensions [mm]					Thread	Ordering data		
			a	b	c	d	e		f	Type	Order No.
Pg16 / Pg13.5	-	-	-	-	8.00	11.50	44.00	Pg16 / Pg13.5	A-INR-PG16/13-N-NS-S	1415216	10
Pg21 / Pg16	-	-	-	-	7.00	10.00	33.50	Pg21 / Pg16	A-INR-PG21/16-N-NS-S	1415217	10
Pg29 / Pg21	-	-	-	-	6.50	9.50	27.00	Pg29 / Pg21	A-INR-PG29/21-N-NS-S	1415218	10

Metal extensions

- Material: brass, nickel-plated
- O-ring: NBR
- Ambient temperature:
-20°C ... +80°C



Metal extension adapter

Thread type	Color	Clamping area [mm]	Dimensions [mm]					Thread	Ordering data		
			a	b	c	d	e		f	Type	Order No.
M16 x 1.5 / M20 x 1.5	silver	-	-	-	6.00	17.50	22.00	M16 / M20	ENLAR-M-KV-M16/M20	1647653	10
M20 x 1.5 / M25 x 1.5	silver	-	-	-	6.50	19.00	27.00	M20 / M25	ENLAR-M-KV-M20/M25	1647666	10
M25 x 1.5 / M32 x 1.5	silver	-	-	-	6.50	21.00	34.00	M25 / M32	ENLAR-M-KV-M25/M32	1647679	10
M32 x 1.5 / M40 x 1.5	silver	-	-	-	7.00	23.00	42.00	M32 / M40	ENLAR-M-KV-M32/M40	1647682	10
Pg13.5 / Pg16	silver	-	-	-	6.50	19.00	24.00	Pg13.5 / Pg16	A-INE-PG13/16-N-NS-S	1415219	10
Pg16 / Pg21	silver	-	-	-	6.50	21.00	30.00	Pg16 / Pg21	A-INE-PG16/21-N-NS-S	1415220	10
Pg21 / Pg29	silver	-	-	-	7.00	23.00	39.00	Pg21 / Pg29	A-INE-PG21/29-N-NS-S	1415221	10

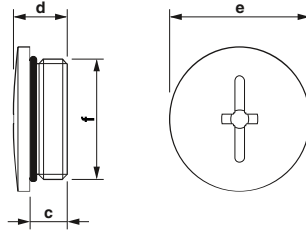
Installation and mounting material

Cable glands

Plastic screw plugs, metric, EN 60423

new

- Material: polyamide, fiberglass-reinforced
- O-ring: EPDM
- Ambient temperature: -40°C ... +100°C
- Degree of protection: IP66/IP68



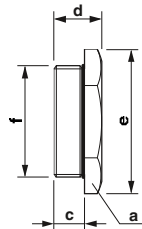
Plastic screw plugs

Thread type	Clamping area [mm]	Dimensions [mm]					Thread
		a	b	c	d	e	
M20 x 1.5	-	-	-	6.00	9.50	24.00	M20
M25 x 1.5	-	-	-	8.00	11.50	30.00	M25
M32 x 1.5	-	-	-	8.00	12.00	37.00	M32
M40 x 1.5	-	-	-	8.00	13.00	46.00	M40

Ordering data			
Order No.	Pcs. / Pkt.	Order No.	Pcs. / Pkt.
light gray		black	
1424519	10	1415206	10
1424520	10	1415207	10
1424521	10	1415208	10
1424522	5	1415210	5

Brass screw plugs, metric, EN 60423

- Material: brass, nickel-plated
- O-ring: NBR
- Ambient temperature: -20°C ... +80°C
- Degree of protection: IP68



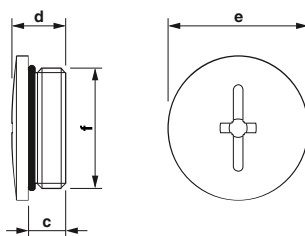
Metal screw plug

Thread type	Color	Clamping area [mm]	Dimensions [mm]					Thread
			a	b	c	d	e	
M16 x 1.5	silver	-	18.00	-	5.00	8.00	20.00	M16
M20 x 1.5	silver	-	22.00	-	6.00	9.00	24.00	M20
M25 x 1.5	silver	-	28.00	-	6.50	10.00	31.50	M25
M32 x 1.5	silver	-	35.00	-	7.00	10.50	39.00	M32
M40 x 1.5	silver	-	44.00	-	8.00	12.00	50.00	M40

Ordering data		
Type	Order No.	Pcs. / Pkt.
HC-M-BS-M16	1646227	10
HC-M-BS-M20	1645846	10
HC-M-BS-M25	1645859	10
HC-M-BS-M32	1645862	10
HC-M-BS-M40	1645875	10

**Plastic screw plugs,
Pg, EN 40430**

- Material: polyamide, fiberglass reinforced
- O-ring: EPDM
- Ambient temperature:
-40°C ... +100°C
- Degree of protection: IP65

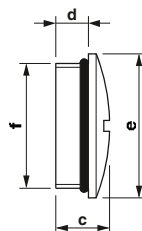


Plastic screw plugs

Thread type	Clamping area [mm]	Dimensions [mm]						Thread	Ordering data			
		a	b	c	d	e	f		Order No.	Pcs. / Pkt.	Order No.	Pcs. / Pkt.
Pg16 x 1.5	-	-	-	6.00	9.50	27.00	Pg16	light gray		black		
Pg21 x 1.5	-	-	-	8.00	11.00	33.00	Pg21	1424523	10	1415213	10	
Pg29 x 1.5	-	-	-	8.00	12.00	44.00	Pg29	1424524	10	1415214	10	
								1424525	10	1415215	10	

**Brass screw plugs,
Pg, EN 40430**

- Material: brass, nickel-plated
- O-ring: NBR
- Ambient temperature:
-20°C ... +80°C
- Degree of protection: IP68



Metal screw plug

Thread type	Color	Clamping area [mm]	Dimensions [mm]						Thread	Ordering data		
			a	b	c	d	e	f		Type	Order No.	Pcs. / Pkt.
Pg11	silver	-	-	-	6.00	9.00	20.00	Pg11	HC-BS-PG11	1674493	10	
Pg13.5	silver	-	-	-	6.50	9.50	22.00	Pg13.5	HC-BS-PG13	1674503	10	
Pg16	silver	-	-	-	6.50	9.50	24.00	Pg16	HC-BS-PG16	1674516	10	
Pg21	silver	-	-	-	7.00	11.00	30.00	Pg21	HC-BS-PG21	1674529	10	
Pg29	silver	-	-	-	8.00	12.00	39.00	Pg29	HC-BS-PG29	1674532	10	
Pg36	silver	-	-	-	9.00	15.00	50.00	Pg36	HC-BS-PG36	1674545	10	

Cable glands

Sealing plugs

new



For sealing unused bore holes in multiple grommets and cable glands.



Sealing plugs

Technical data

General data	
Material	PA
Ambient temperature (operation)	-60°C ... 100°C

Ordering data

Description	Color	Type	Order No.	Pcs. / Pkt.
Closing cap				
Ø 3 mm	red	SEALING PLUG 3X12 RD	1400238	10
Ø 5 mm	red	SEALING PLUG 5X12 RD	1400253	10
Ø 6 mm	red	SEALING PLUG 6X16 RD	1400254	10
Ø 7 mm	red	SEALING PLUG 7X16 RD	1400255	10
Ø 8 mm	red	SEALING PLUG 8X16 RD	1400257	10
Ø 9 mm	red	SEALING PLUG 9X16 RD	1400259	10
Ø 10 mm	red	SEALING PLUG 10X16 RD	1400284	10
Ø 12 mm	red	SEALING PLUG 12X22 RD	1400260	10
Ø 13 mm	red	SEALING PLUG 13X22 RD	1400265	10
Ø 14 mm	red	SEALING PLUG 14X22 RD	1400270	10
Ø 17 mm	red	SEALING PLUG 17X17 RD	1421861	10
Ø 20 mm	red	SEALING PLUG 20X22 RD	1421862	10
Ø 25 mm	red	SEALING PLUG 25X30 RD	1421863	10
Ø 28 mm	red	SEALING PLUG 28X30 RD	1421864	10
Ø 35 mm	red	SEALING PLUG 35X35 RD	1421865	10

